

Litematic and Litematic Head

SERIES 318 — High-resolution Measuring Unit

FEATURES

- The Litematic is designed for measuring easily-deformed workpieces and high-precision parts such as pin gages, thin-wall bearings, plastic parts, and springs.
- Extra-low measuring force of 0.01N (1gf).
- Super Litematic employs a unique Laser Hologram as the length standard, ensuring excellent measuring accuracy and repeatability.
- Ceramic anvil is free from corrosion and easy to maintain (Litematic).
- The measuring unit can be mounted onto fixtures or an optional stand to allow great flexibility of use (Litematic Head).
- Includes SPC output.



318-221
Litematic



318-217
Super Litematic

Laser Beam Safety Precautions

This system uses a low-power invisible laser beam (780nm) which corresponds to a CLASS 1 (invisible radiation) of IEC60825-1 for measurement. The CLASS 1 laser warning label as shown below is attached to the main unit.

CLASS 1 LASER PRODUCT



318-226
Litematic Head

SPECIFICATIONS

Range	Order No.	Resolution	Accuracy (at 20°C±1°C)**	Remarks
0 - 50mm	318-217*	0.01μm, 0.1μm, 1μm,	0.15μm (0.25μm: 35 - 50mm)	w/ ø26mm grooved ceramic anvil
0 - 50mm	318-221	.5μinch, 5μinch, 50μinch	(0.5+L/100)μm	w/ ø100mm grooved ceramic anvil
0 - 50mm	318-226	switchable	L=Measured length (mm)	Litematic Head

* To denote your AC power cable add the following suffixes to the order No.: **A** for UUCSA, **D** for CEE, **DC** for CCC, **E** for BS, **F** for SAA, **K** for EK, **No suffix** is required for JIS/100V.

** 20°C±0.5°C: Super Litematic (318-217)



Technical Data

Accuracy: Refer to the list of specifications (excludes quantizing error)
 Resolution: Refer to the list of specifications
 Repeatability: $\sigma=0.05\mu\text{m}$ ($\sigma=0.02\mu\text{m}$: 318-217)
 Display unit: 8 digits and 14mm character height
 Stroke: 51.2mm (using standard contact point)
 Measuring force: 0.01N
 Spindle feed speed: 2mm/s, 4mm/s, 8mm/s
 (1mm/s, 2mm/s, 3mm/s, 5mm/s: 318-217)
 Length standard: Photoelectric linear encoder
 (Laser Hologram: 318-217)
 Contact point: ø3mm carbide ball (R5 carbide ball: 318-217)
 Power supply: 85 - 264V AC

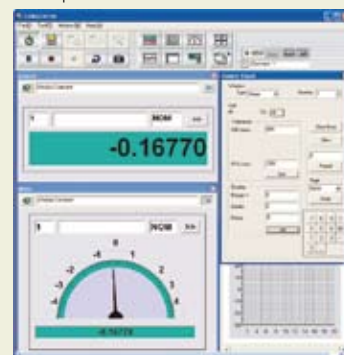
Optional Accessories

- 936937: SPC cable (1mm)
- 965014: SPC cable (2mm)
- 957460: 300x250mm granite stand with bracket for Litematic Head
- 101118: Contact point, Shell
- 120066: Contact point, ø0.45mm needle (carbide)
- 120059: Contact point, ø7.0mm spherical (carbide)
- 120060: Contact point, ø10.5mm spherical (carbide)
- 937179T: Foot switch
- 264-504: Digimatic Mini-processor DP-1VR
- 264-012-10: Input tool (for USB port)
- 02ADM270-2: Sensorpak (data capture software w/ I/O cable)



* Digimatic output is to six significant figures.

Sensorpak



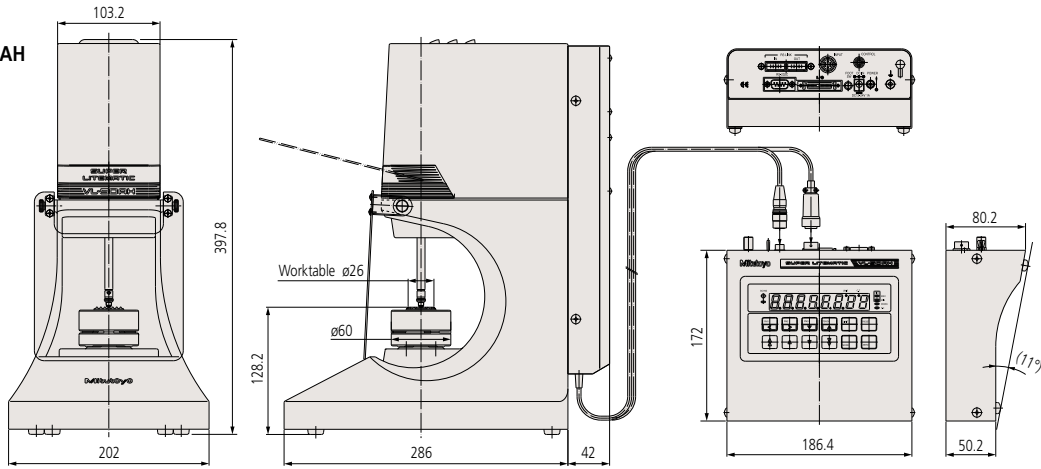
Application



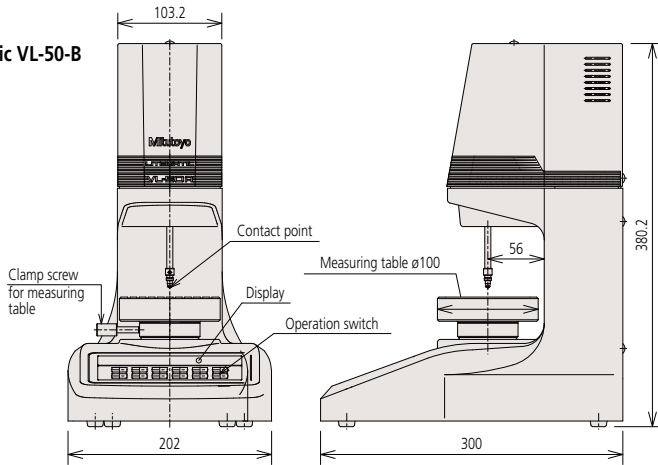
DIMENSIONS

Unit: mm

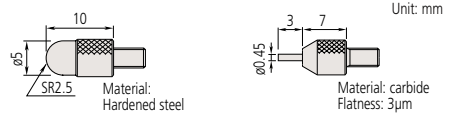
Litematic VL-50AH



Litematic VL-50-B

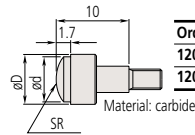


Interchangeable contact points



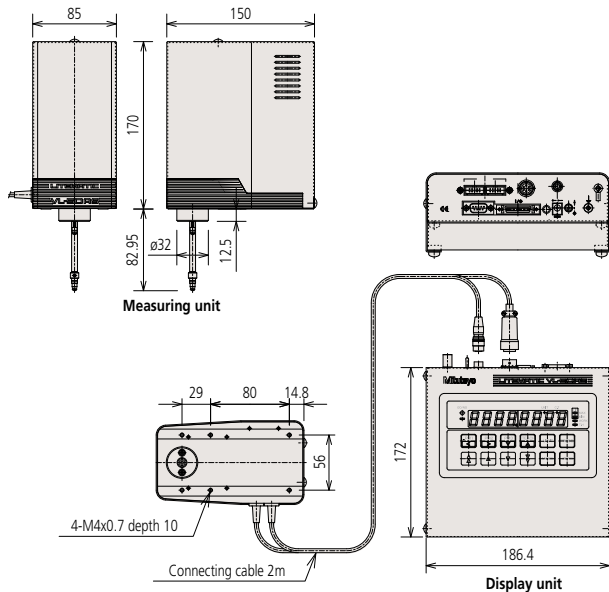
Order No.	Measuring force
101118	0.02N

Order No.	Measuring force
120066	0.01N

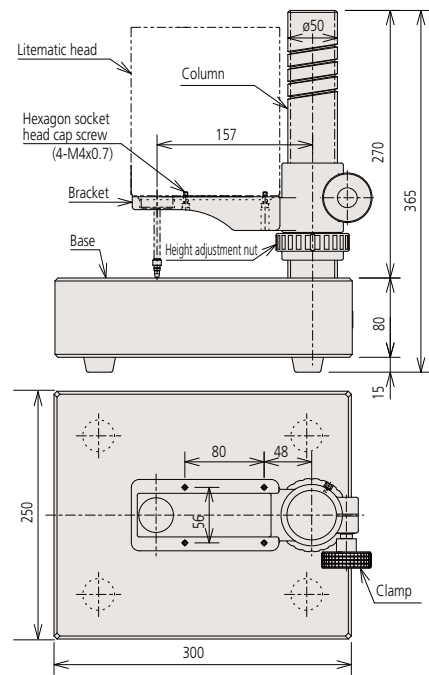


Order.No.	Measuring force	D	d	SR
120059	0.03N	ø7.5	ø6.5	7
120060	0.06N	ø10.5	ø9.5	10

Litematic Head VL-50S-B



Optional stand for VL-50S-B





Laser Scan Micrometer Selection Guide

MEASURING UNITS

Appearance	Model	Laser Classification	Measuring range	Resolution (Selectable)
	LSM-902*	Visible (650nm), IEC Class 2/ FDA Class II / JIS Class2	0.1 - 25mm (.004" - .1")	0.01μm - 10μm (.000001" - .0005")
	LSM-500S	Visible (650nm), IEC Class 2/ FDA Class II / JIS Class2	0.005 - 2mm (.0002" - .08")	0.01μm - 10μm (.000001" - .0005")
	LSM-501S	Visible (650nm), IEC Class 2/ FDA Class II / JIS Class2	0.05 - 10mm (.002" - .4")	0.01μm - 10μm (.000001" - .0005")
	LSM-503S	Visible (650nm), IEC Class 2/ FDA Class II / JIS Class2	0.3 - 30mm (.012" - 1.18")	0.02μm - 100μm (.000001" - .005")
	LSM-506S	Visible (650nm), IEC Class 2/ FDA Class II / JIS Class2	1 - 60mm (.04" - 2.36")	0.05μm - 100μm (.000002" - .005")
	LSM-512S	Visible (650nm), IEC Class 2/ FDA Class II / JIS Class2	1 - 120mm (.04" - 4.72")	0.1μm - 100μm (.000005" - .005")
	LSM-516S	Visible (650nm), IEC Class 2/ FDA Class II / JIS Class2	1 - 160mm (.04" - 6.30")	0.1μm - 100μm (.000005" - .005")
 With display unit	LSM-9506N Measuring/display unit one-piece structure for bench- top use only	Visible (650nm), IEC Class 2/ FDA Class II / JIS Class2	0.5 - 60mm (.02" - 2.36")	0.05μm - 100μm (.000002" - .005")

DISPLAY UNITS

Appearance	Model	Type	Application	Interface units equipped
	LSM-6200 LSM-6900*	Multi-function type	Bench-top use	<ul style="list-style-type: none"> • RS-232C • I/O • Analog output
	LSM-5200	Compact type (Low cost)	Assembly/ bench-top use (DIN size)	<ul style="list-style-type: none"> • RS-232C • I/O • Analog output • USB 2.0

*The LSM-902/6900 combination is a factory-built package.

LSM-902/6900

SERIES 544 — Ultra-high Accuracy Non-contact Measuring System

Technical Data

Range: 0.1 - 25mm
 Resolution: 0.00001 - 0.01mm selectable
 (.000001" - .0005") (): Inch/Metric models
 Linearity at 20°C*: Entire range: $\pm 0.5\mu\text{m}$
 Narrow range: $\pm(0.3+0.1\Delta D)\mu\text{m}$
 Repeatability ($\pm 2\sigma$): $\pm 0.05\mu\text{m}$
 Positional error**: $\pm 0.5\mu\text{m}$
 Measuring region: 3 x 25mm
 Laser wavelength: 650nm, Visible
 Number of scans: 800 scans/s
 Laser scanning speed: 56m/s
 Applicable standard for laser: IEC (FDA: **544-496A**)
 Main display: 16-digit fluorescent tube
 Interface units equipped: RS-232C, Analog I/O, Foot switch
 Power supply: 100 - 240V AC $\pm 10\%$, 40VA, 50/60Hz
 * At the center of the measuring region.
 ** Potential measurement error due to variation in workpiece position within the measuring region.
 ΔD = Difference in diameter between the mastergauge and workpiece

Display Unit Functions

Zero-setting, Presetting, GO/ \pm NG judgment, Multi-limit judgment, Offset value setting, Sample measurement, Statistical calculation, Group judgment, Data output, Workpiece position display, mm/inch switching, Dual-gage calibration, Transparent object measurement, Dual-unit measurement (optional), Automatic measurement, Abnormal data elimination

Optional Accessories

- 02AGD180:** Calibration gage set for LSM-902/6900
- 02AGD270:** Workstage
- 02AGD280:** Adjustable workstage
- 02AGD600A:** Thermal printer (w/100V AC adapter)
- 02AGD600B:** Thermal printer (w/120V AC adapter)
- 02AGD600C:** Thermal printer (w/130V AC adapter)

FEATURES

- Suitable for pin and plug gage measurements.
- Wide measuring range of $\varnothing 0.1\text{mm}$ to $\varnothing 25\text{mm}$.
- Provides ultra-high accuracy with a linearity of $\pm 0.5\mu\text{m}$ over the entire measurement range and $\pm(0.3+0.1\Delta D)\mu\text{m}$ in the narrow range.
- Ultra-high repeatability of $\pm 0.05\mu\text{m}$



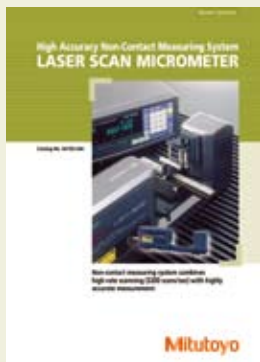
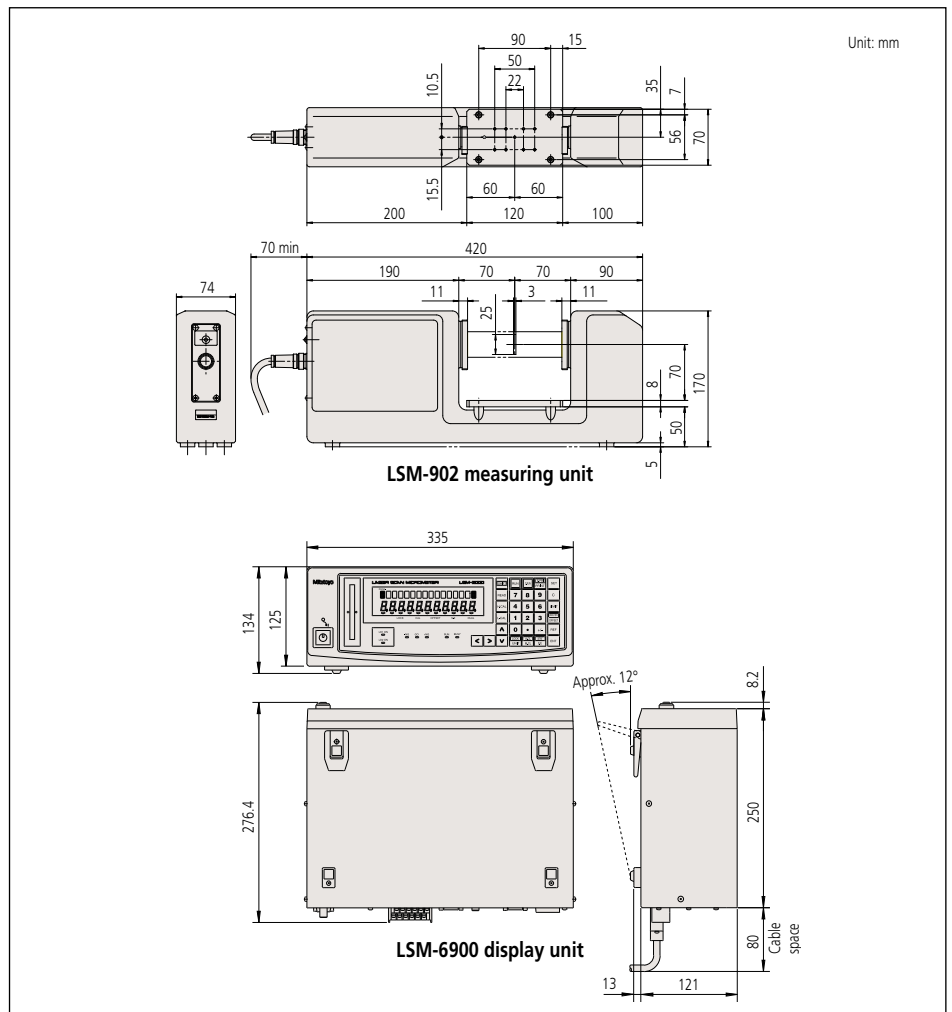
LSM-6900 display unit

LSM-902 measuring unit

Order No.: **544-495*** (Metric)
544-496** (Inch/Metric)

* To denote your AC power cable add the following suffixes to the order No.: **D** for CEE, **DC** for CCC, **E** for BS, **F** for SAA, **K** for EK, **No suffix** is required for JIS/100V
 ** To denote your AC power cable add the following suffixes to the order No.: **A** for UL/CSA, **D** for CEE, **DC** for CCC, **E** for BS, **F** for SAA, **K** for EK, **No suffix** is required for JIS/100V

DIMENSIONS



Refer to the Laser Scan Micrometer leaflet (E4156) for more details.

LSM-500S, LSM-501S, LSM-503S

SERIES 544 — High Accuracy Non-contact Measuring System

FEATURES: LSM-500S

- Permits measurements starting from $\phi 5\mu\text{m}$.
- Provides ultra-high accuracy with a linearity of $\pm 0.3\mu\text{m}$ over the entire measurement range (5 μm to 2mm).
- Ultra-high repeatability of $\pm 0.03\mu\text{m}$



Order No.: 544-531 (JIS)
544-532 (IEC, FDA)

FEATURES: LSM-501S

- Provides ultra-high accuracy with a linearity of $\pm 0.5\mu\text{m}$ over the entire measurement range (0.05mm to 10mm) and $\pm(0.3+0.1\Delta D)\mu\text{m}$ in the narrow range.
- Ultra-high repeatability of $\pm 0.04\mu\text{m}$



Order No.: 544-533 (JIS)
544-534 (IEC, FDA)

FEATURES: LSM-503S

- General-purpose type with a measurement range of 0.3mm to 30mm.
- Provides high accuracy with a linearity of $\pm 1.0\mu\text{m}$ over the entire measurement range and $\pm(0.6+0.1\Delta D)\mu\text{m}$ in the narrow range.
- Excellent repeatability of $\pm 0.1\mu\text{m}$



Order No.: 544-535 (JIS)
544-536 (IEC, FDA)

Technical Data of LSM-500S

Range: 0.005 - 2mm
Resolution: 0.00001 - 0.01mm selectable
(.000001" - .0005") (): Inch/Metric models
Linearity at 20°C*: $\pm 0.3\mu\text{m}$
Repeatability ($\pm 2\sigma$): $\pm 0.03\mu\text{m}$
Positional error**: $\pm 0.4\mu\text{m}$
Measuring region: 1x2mm
Laser wavelength: 650nm, Visible
Number of scans: 3200 scans/s
Laser scanning speed: 76m/s
Applicable standard for laser: IEC, FDA (544-532), JIS (544-531)
* At the center of the measuring region.
** Potential measurement error due to variation in workpiece position within the measuring region.

Technical Data of LSM-501S

Range: 0.05 - 10mm
Resolution: 0.00001 - 0.01mm selectable
(.000001" - .0005") (): Inch/Metric models
Linearity at 20°C*: Entire range: $\pm 0.5\mu\text{m}$
Narrow range: $\pm(0.3+0.1\Delta D)\mu\text{m}$
Repeatability ($\pm 2\sigma$): $\pm 0.04\mu\text{m}$
Positional error**: $\pm 0.5\mu\text{m}$
Measuring region: 2x10mm ($\phi 0.05 - \phi 0.1\text{mm}$)
4x10mm ($\phi 0.1 - \phi 10\text{mm}$)
Laser wavelength: 650nm, Visible
Number of scans: 3200 scans/s
Laser scanning speed: 113m/s
Applicable standard for laser: IEC, FDA (544-534), JIS (544-533)
* At the center of the measuring region.
** Potential measurement error due to variation in workpiece position within the measuring region.
 ΔD =Difference in diameter between the mastergauge and workpiece

Technical Data of LSM-503S

Range: 0.3 - 30mm
Resolution: 0.00002 - 0.1mm selectable
(.000001" - .005") (): Inch/Metric models
Linearity at 20°C*: Entire range: $\pm 1.0\mu\text{m}$
Narrow range: $\pm(0.6+0.1\Delta D)\mu\text{m}$
Repeatability ($\pm 2\sigma$): $\pm 0.11\mu\text{m}$
Positional error**: $\pm 1.5\mu\text{m}$
Measuring region: 10x30mm
Laser wavelength: 650nm, Visible
Number of scans: 3200 scans/s
Laser scanning speed: 226m/s
Acceptable standard of laser: IEC, FDA (544-536), JIS (544-535)
* At the center of the measuring region.
** Potential measurement error due to variation in workpiece position within the measuring region.
 ΔD =Difference in diameter between the mastergauge and workpiece

Optional Accessories for LSM-500S

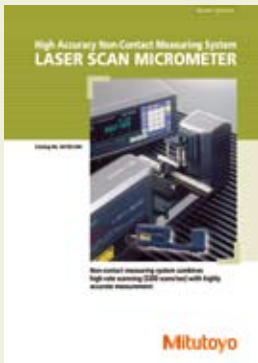
- 02AGD110:** Calibration gage set (ø0.1mm, ø2.0mm)
- 02AGD200:** Wire guiding pulley
- 02AGD220:** Air shield
- 957608:** Air cleaner for air shield
- 02AGN780A:** Extension signal cable 5m
- 02AGN780B:** Extension signal cable 10m
- 02AGN780C:** Extension signal cable 15m

Optional Accessories for LSM-501S

- 02AGD120:** Calibration gage set (ø0.1mm, ø10mm)
 - 02AGD210:** Wire guiding pulley
 - 02AGD400:** Adjustable workstage
 - 02AGD440:** Center support*
 - 02AGD450:** Adjustable V-block*
 - 02AGD230:** Air shield
 - 957608:** Air cleaner for air shield
 - 02AGC150A:** Extension relay cable 1m
 - 02AGN780A:** Extension signal cable 5m
 - 02AGN780B:** Extension signal cable 10m
 - 02AGN780C:** Extension signal cable 15m
- *Use with an adjustable workstage.

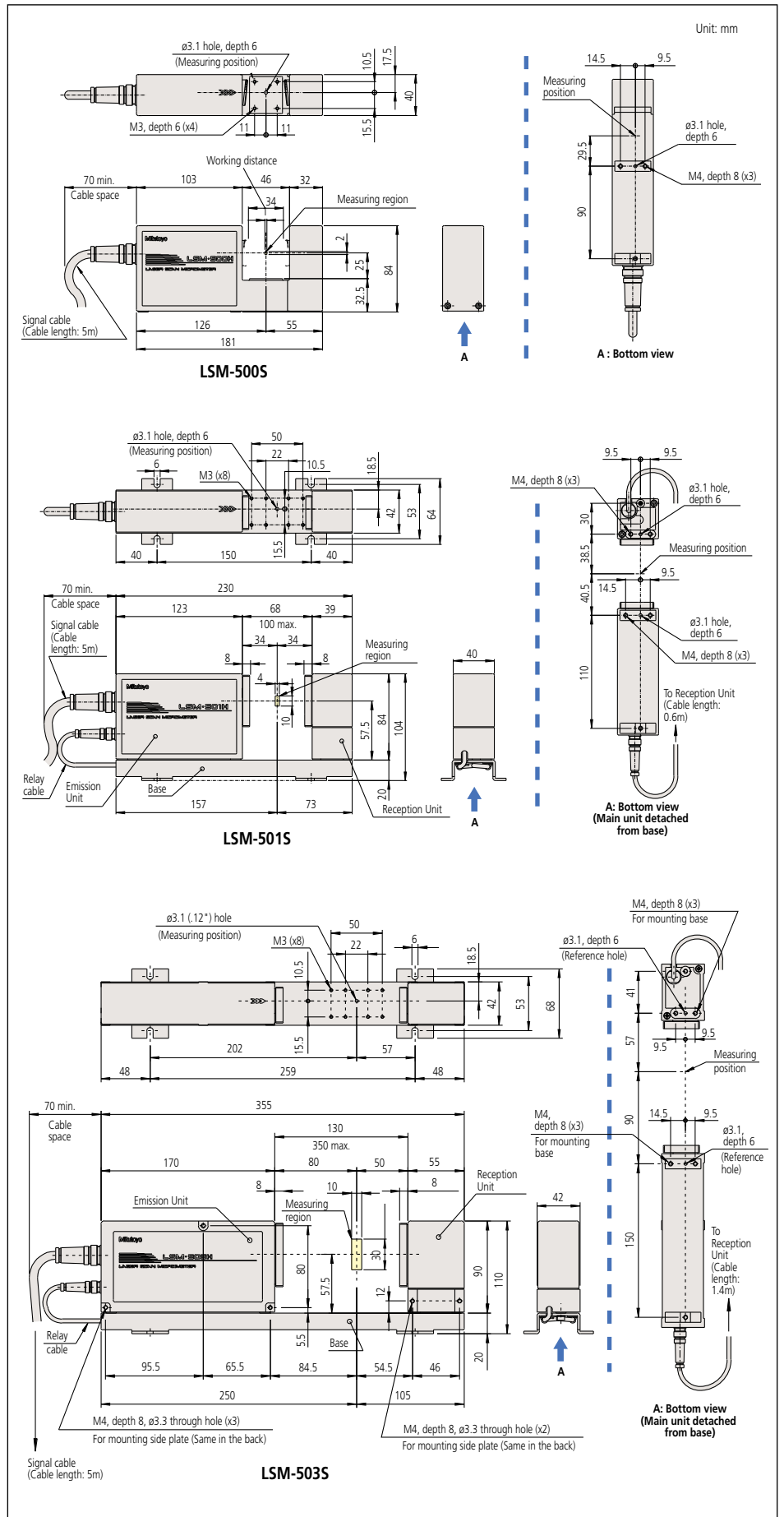
Optional Accessories for LSM-503S

- 002AGD130:** Calibration gage set (ø1mm, ø30mm)
 - 02AGD490:** Adjustable workstage
 - 02AGD440:** Center support*
 - 02AGD450:** Adjustable V-block*
 - 02AGD240:** Air shield
 - 957608:** Air cleaner for air shield
 - 02AGC150A:** Extension relay cable 1m
 - 02AGC150B:** Extension relay cable 3m
 - 02AGC150C:** Extension relay cable 5m
 - 02AGN780A:** Extension signal cable 5m
 - 02AGN780B:** Extension signal cable 10m
 - 02AGN780C:** Extension signal cable 15m
 - 02AGN780D:** Extension signal cable 20m
- *Use with an adjustable workstage.



Refer to the Laser Scan Micrometer leaflet (E4156) for more details.

DIMENSIONS



LSM-506S, LSM-512S, LSM-516S

SERIES 544 — High Accuracy Non-contact Measuring System

FEATURES: LSM-506S

- General-purpose type with a measurement range of 1mm to 60mm.
- Provides high accuracy with a linearity of $\pm 3\mu\text{m}$ over the entire measurement range and $\pm(1.5+0.5\Delta D)\mu\text{m}$ in the narrow range.
- Excellent repeatability of $\pm 0.36\mu\text{m}$



Order No.: 544-537 (JIS)
544-538 (IEC, FDA)

FEATURES: LSM-512S

- General-purpose type with a wide measurement range of 1mm to 120mm.
- Provides high accuracy with a linearity of $\pm 6\mu\text{m}$ over the entire measurement range and $\pm(4.0+0.5\Delta D)\mu\text{m}$ in the narrow range.
- Excellent repeatability of $\pm 0.8\mu\text{m}$



Order No.: 544-539 (JIS)
544-540 (IEC, FDA)

FEATURES: LSM-516S

- General-purpose type with a wide measurement range of 1mm to 160mm.
- Provides high accuracy with a linearity of $\pm 7\mu\text{m}$ over the entire measurement range and $\pm(4.0+2.0\Delta D)\mu\text{m}$ in the narrow range.
- Excellent repeatability of $\pm 1.4\mu\text{m}$



Order No.: 544-541 (JIS)
544-542 (IEC, FDA)

Technical Data of LSM-506S

Range: 1 - 60mm
Resolution: 0.00005 - 0.1mm selectable
(.000002" - .005") (): Inch/Metric models
Linearity at 20°C*: Entire range: $\pm 3\mu\text{m}$
Narrow range: $\pm(1.5+0.5\Delta D)\mu\text{m}$
Repeatability ($\pm 2\sigma$): $\pm 0.36\mu\text{m}$
Positional error**: $\pm 4\mu\text{m}$
Measuring region: 20 x 60mm
Laser wavelength: 650nm, Visible
Number of scans: 3200 scans/s
Laser scanning speed: 452m/s
Applicable standard for laser: IEC, FDA (544-538), JIS (544-537)
* At the center of the measuring region.
** Potential measurement error due to variation in workpiece position within the measuring region.

Technical Data of LSM-512S

Range: 1 - 120mm
Resolution: 0.0001 - 0.1mm selectable
(.000005" - .005") (): Inch/Metric models
Linearity at 20°C*: Entire range: $\pm 6\mu\text{m}$
Narrow range: $\pm(4.0+0.5\Delta D)\mu\text{m}$
Repeatability ($\pm 2\sigma$): $\pm 0.8\mu\text{m}$
Positional error**: $\pm 8\mu\text{m}$
Measuring region: 30 x 120mm
Laser wavelength: 650nm, Visible
Number of scans: 3200 scans/s
Laser scanning speed: 904m/s
Applicable standard for laser: IEC, FDA (544-540), JIS (544-539)
* At the center of the measuring region.
** Potential measurement error due to variation in workpiece position within the measuring region.
 ΔD =Difference in diameter between the mastergauge and workpiece

Technical Data of LSM-516S

Range: 1 - 160mm
Resolution: 0.0001 - 0.1mm selectable
(.000005" - .005") (): Inch/Metric models
Linearity at 20°C*: Entire range: $\pm 7\mu\text{m}$
Narrow range: $\pm(4.0+2.0\Delta D)\mu\text{m}$
Repeatability ($\pm 2\sigma$): $\pm 1.4\mu\text{m}$
Positional error**: $\pm 8\mu\text{m}$
Measuring region: 40 x 160mm
Laser wavelength: 650nm, Visible
Number of scans: 3200 scans/s
Laser scanning speed: 1206m/s
Applicable standard for laser: IEC, FDA (544-534), JIS (544-533)
* At the center of the measuring region.
** Potential measurement error due to variation in workpiece position within the measuring region.
 ΔD =Difference in diameter between the mastergauge and workpiece

Optional Accessories for LSM-506S

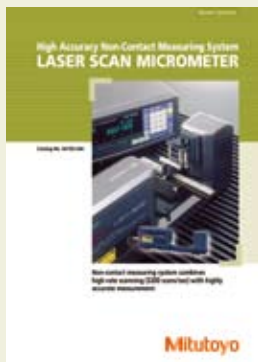
- 02AGD140:** Calibration gage set (ø1mm, ø60mm)
 - 02AGD520:** Adjustable workstage
 - 02AGD580:** Center support*
 - 02AGD590:** Adjustable V-block*
 - 02AGD250:** Air shield
 - 957608:** Air cleaner for air shield
 - 02AGC150A:** Extension relay cable 1m
 - 02AGC150B:** Extension relay cable 3m
 - 02AGC150C:** Extension relay cable 5m
 - 02AGN780A:** Extension signal cable 5m
 - 02AGN780B:** Extension signal cable 10m
 - 02AGN780C:** Extension signal cable 15m
 - 02AGN780D:** Extension signal cable 20m
- *Use with an adjustable workstage.

Optional Accessories for LSM-512S

- 02AGD150:** Calibration gage set (ø20mm, ø120mm)
- 02AGD260:** Air shield
- 957608:** Air cleaner for air shield
- 02AGC150A:** Extension relay cable 1m
- 02AGC150B:** Extension relay cable 3m
- 02AGC150C:** Extension relay cable 5m
- 02AGN780A:** Extension signal cable 5m
- 02AGN780B:** Extension signal cable 10m
- 02AGN780C:** Extension signal cable 15m
- 02AGN780D:** Extension signal cable 20m

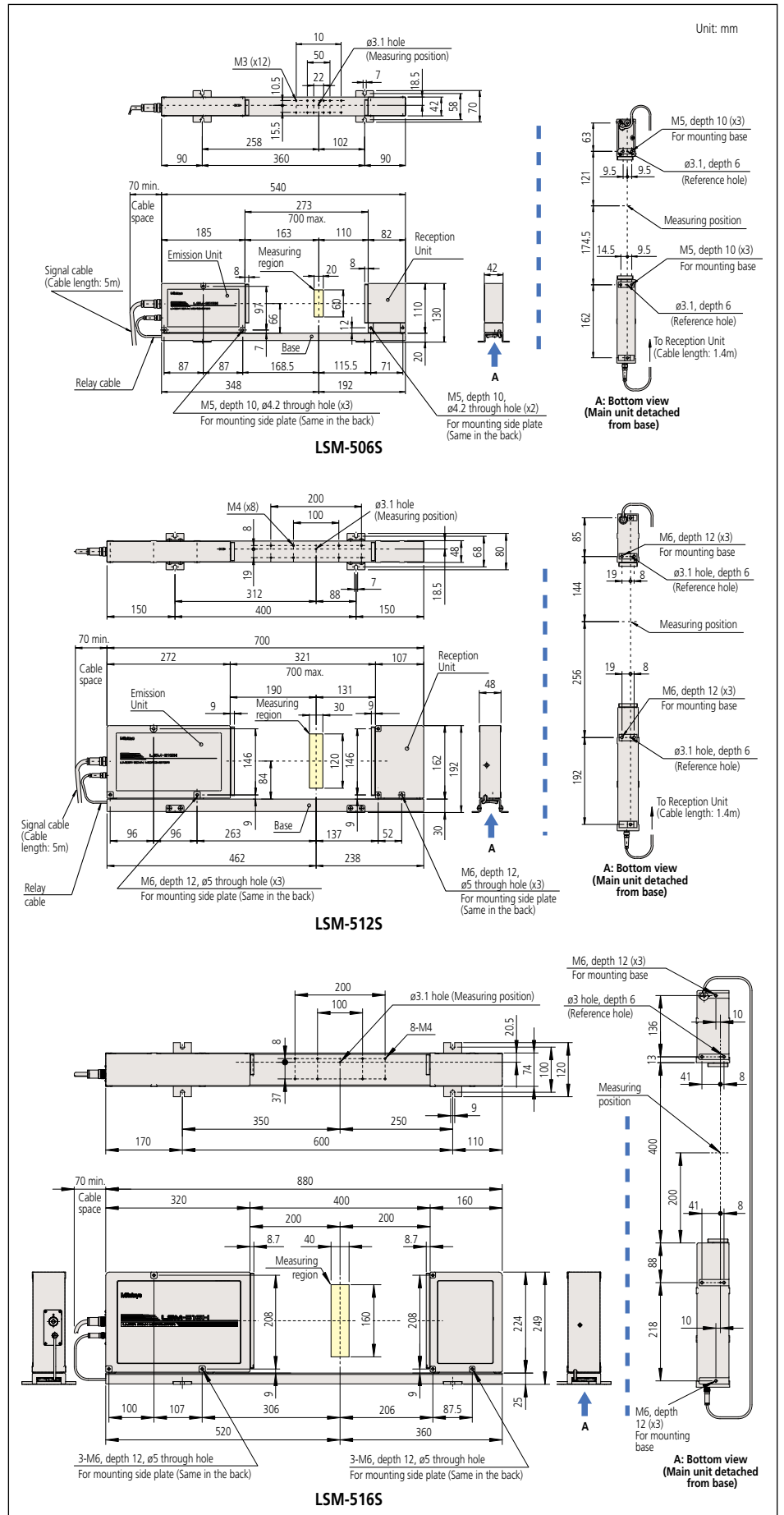
Optional Accessories for LSM-516S

- 002AGM300:** Calibration gage set (ø20mm, ø160mm)
- 02AGC150A:** Extension relay cable 1m
- 02AGC150B:** Extension relay cable 3m
- 02AGC150C:** Extension relay cable 5m
- 02AGN780A:** Extension signal cable 5m
- 02AGN780B:** Extension signal cable 10m
- 02AGN780C:** Extension signal cable 15m
- 02AGN780D:** Extension signal cable 20m



Refer to the Laser Scan Micrometer leaflet (E4156) for more details.

DIMENSIONS



LSM-9506

SERIES 544 — Bench Top Type Non-contact Measuring System

FEATURES

- Measurement system and display integrated into a single unit for easy bench-top inspection.
- A statistical calculation function is provided.
- Included standard RS-232C interface and SPC output interface.

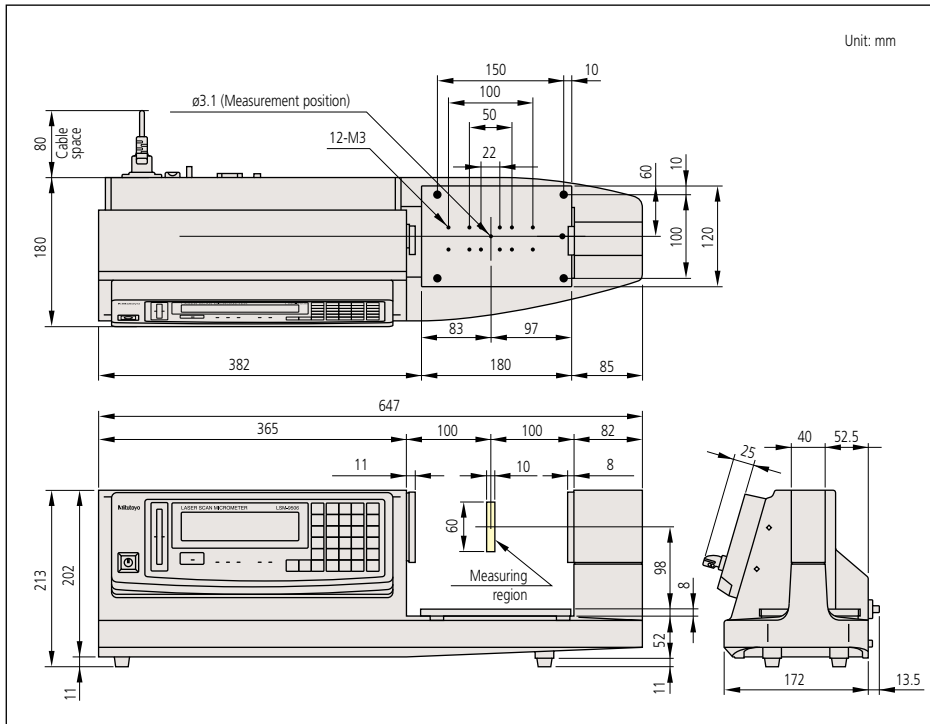


LSM-9506

Order No. : **544-115*** (Metric)
544-116** (Inch/Metric)
544-116-1A***(Inch/Metric)

* To denote your AC power cable add the following suffixes to the order No.: **D** for CEE, **DC** for CCC, **E** for BS, **F** for SAA, **K** for EK, **No suffix** is required for JIS/100V
 ** To denote your AC power cable add the following suffixes to the order No.: **A** for UL/CSA, **D** for CEE, **DC** for CCC, **E** for BS, **F** for SAA, **K** for EK, **No suffix** is required for JIS/100V
 *** To denote your AC power cable add the following suffixes to the order No.: **A** for UL/CSA

DIMENSIONS



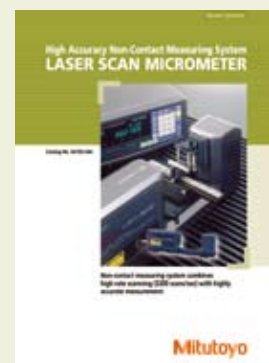
Unit: mm

Technical Data

Range: 0.5 - 60mm
 Resolution: 0.00005 - 0.1mm
 (.000002" - .005") (): Inch/Metric models
 Linearity at 20°C*: ±2.5µm
 Repeatability (±2σ): ±0.6µm
 Positional error** : ±2.5µm
 Measuring region: 10 x 60mm
 Laser wavelength: 650nm, Visible
 Number of scans: 1600 scans/s
 Laser scanning speed: 226m/s
 Applicable standard for laser: IEC (FDA: **544-116-1A**),
 Main display: 16-digit fluorescent tube
 Interface units equipped: RS-232C, SPC, Foot switch
 Power supply: 100 - 240V AC±10%, 40VA, 50/60Hz
 * At the center of the measuring region.
 ** Potential measurement error due to variation in workpiece position within the measuring region.

Function

Zero-setting, Presetting, GO/±NG judgment, Multi-limit judgment, Offset value setting, Sample measurement, Statistical calculation, Group judgment, Data output, Workpiece position display, mm/inch switching, Dual-gage calibration, Transparent object measurement, Automatic measurement, Abnormal data elimination



Refer to the Laser Scan Micrometer leaflet (E4156) for more details.

LSM-5200 Display Unit

SERIES 544 — Compact Display Unit for Real-time Multi-channel Measurement

Technical Data

Main display: 9-digit LED
 Interface units equipped: USB2.0, RS-232C, Analog I/O, Foot switch
 Power supply: +24V DC±10%, 1A

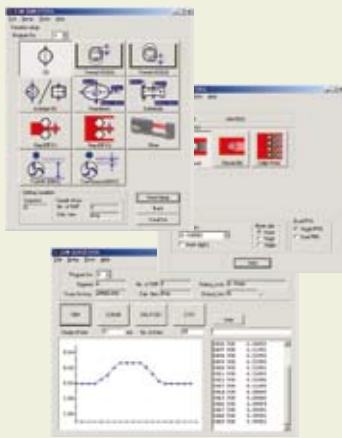
Display Unit Functions

Zero-setting, presetting, GO/±NG judgment, Offset value setting, Sample measurement, Statistical calculation, Data output, Workpiece position display, mm/inch switching, Dual-gage calibration, Transparent object measurement, Automatic measurement, Abnormal data elimination

QUICKTOOL

QUICKTOOL is a free software tool that makes LSM-5200 key-operated settings simple and easy. Please contact your local Mitutoyo office for details.

Note that QUICKTOOL for LSM-6200 and QUICKTOOL for LSM-5200 are incompatible.



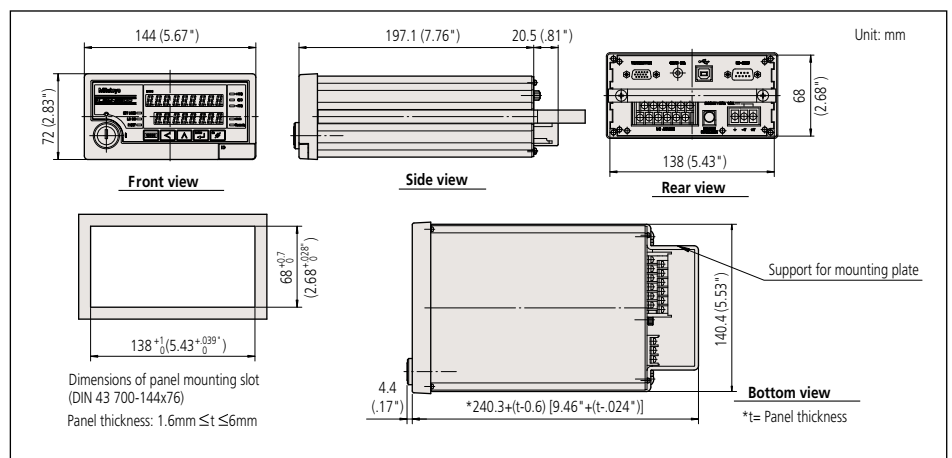
FEATURES

- Panel-mount type (with dimensions conforming to DIN standards) for easy system integration.
- Capable of calculating mean, maximum, minimum, and range (maximum - minimum).
- Either the segment measurement (7 segments max.) or edge measurement (1 to 255 edges) can be selected.
- USB, RS-232C, I/O and analog interfaces are provided as standard.
- The arithmetical average or moving average can be selected.
- GO/±NG judgment function.



Order No.: 544-047

DIMENSIONS



LSMPAK (Available in the near future)

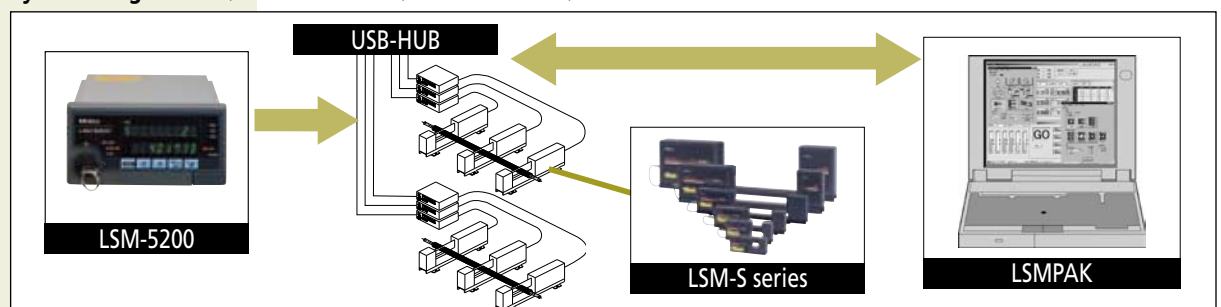
This software can import measurement data from multiple LSM-5200 Display Units to a personal computer, allowing a variety of measuring systems to be constructed.

FEATURES

- Capable of processing a maximum of 10 channels of measurement-point data (USB-HUB connection).
- Capable of composite calculation between Measuring Units (multiple channels), statistical calculation, and calculation results output as a file.



System Diagram Example of concurrent multi-point measurement of printer rollers



Other Functions

Rich choice of functions (e.g. counter, graphs, calculation results)

Operating Environment

- Connection interface: USB2.0
- PC: DOS/V(IBM) compatible machine
- CPU: 2GHz or more (recommended)
- OS/software: Windows XP, Excel 2000 XP Japanese version
- Memory: 256MB or more (recommended)
- Applicable display unit: LSM-5200

LSM-6200 Display Unit

SERIES 544 — Standard Display Unit for Laser Scan Micrometer

FEATURES

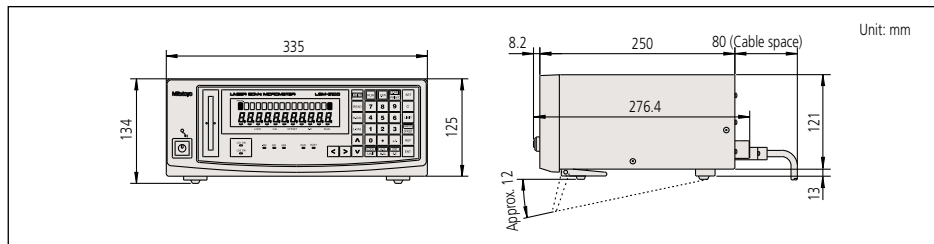
- Setup values can be continuously monitored with this dual-display design. Simultaneous display of two measurement values is also possible.
- Either the segment measurement (7 segments max.) or edge measurement (1 to 255 edges) can be selected.
- Includes RS-232C and I/O and analog interface capabilities.
- Includes statistical calculation and abnormal data eliminating functions.



Order No.: **544-071*** (Metric)
544-072* (Inch/Metric)

* To denote your AC power cable add the following suffixes to the order No.: **A** for UL/CSA, **D** for CEE, **DC** for CCC, **E** for BS, **F** for SAA, **K** for EK, **No suffix** is required for JIS/100V

DIMENSIONS



Technical Data

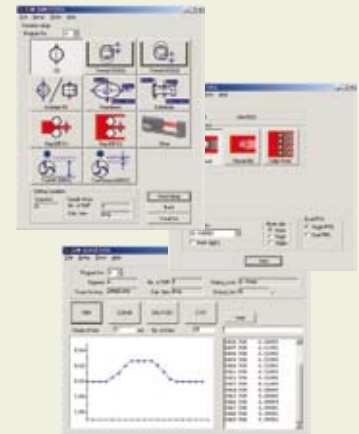
Main display: 16-digit fluorescent tube
Interface units equipped: RS-232C, Analog I/O, Foot switch
Power supply: 100 - 240V AC±10%, 40VA, 50/60Hz

Display Unit Functions



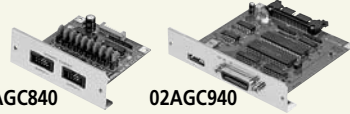







Zero-setting, Presetting, GO/±NG judgment, Multi-limit judgment, Offset value setting, Sample measurement, Statistical calculation, Group judgment, Data output, Workpiece position display, mm/inch switching, Dual-gage calibration, Transparent object measurement, Dual-unit measurement (optional), Automatic measurement, Abnormal data elimination

QUICKTOOL

QUICKTOOL is a free software tool that makes LSM-5200 key-operated settings simple and easy. Please contact your local Mitutoyo office for details. Note that QUICKTOOL for LSM-6200 and QUICKTOOL for LSM-5200 are incompatible.



Optional Accessories for LSM

Appearance	Order No.	Description	Application
	02AGD110 02AGD120 02AGD180 02AGD130 02AGD140 02AGD150 02AGM300 02AGD170	Calibration gage set Calibration gage set Calibration gage set Calibration gage set Calibration gage set Calibration gage set Calibration gage set Calibration gage set	LSM-500S LSM-501S LSM-902 LSM-503S LSM-506S LSM-512S LSM-516S LSM-9506
	02AGP150	Dual-type add-on unit	LSM-6200
 02AGC840 02AGC940	02AGC840 02AGC880 02AGC910 02AGC940	Digimatic (SPC) code out unit 2nd I/O & analog interface unit BCD interface unit GP-IB interface unit	LSM-6200/6900 LSM-6200/6900 LSM-6200/6900 LSM-6200/6900
 Extension signal cable Extension relay cable	02AGN780A 02AGN780B 02AGN780C 02AGN780D 02AGC150A 02AGC150B 02AGC150C	Extension signal cable (5m) Extension signal cable (10m) Extension signal cable (15m) Extension signal cable (20m) Extension relay cable (1m) Extension relay cable (3m) Extension relay cable (5m)	Any model of LSM* Any model of LSM* Any model of LSM* Any model of LSM* Any model of LSM** Any model of LSM** Any model of LSM**
	936937	SPC cable (1m)	LSM-6200/6900/9506
	937179T	Foot switch	LSM-6200/6900/9506
	02AGD270 02AGD400 02AGD280 02AGD490 02AGD520 02AGD370 02AGD680 02AGD440 02AGD580 02AGD450 02AGD590	Work stage Adjustable workstage Adjustable workstage Adjustable workstage Adjustable workstage Adjustable workstage Adjustable workstage Center support Center support Adjustable V-block Adjustable V-block	LSM-501S/503S/902 LSM-501S LSM-902 LSM-503S LSM-506S LSM-9506 LSM-9506 LSM-501S/503S/902 LSM-506S/9506 LSM-501S/503S/902 LSM-506S/9506
	02AGD200 02AGD210	Wire guiding pulley Wire guiding pulley	LSM-500S LSM-501S
	02AGD220 02AGD230 02AGD240 02AGD250 02AGD260 957608	Air shield Air shield Air shield Air shield Air shield Air cleaner	LSM-500S LSM-501S LSM-503S LSM-506S LSM-512S Any model of LSM
	02AGD600A 02AGD600B 02AGD600C	Thermal printer (100V AC) Thermal printer (120V AC) Thermal printer (240V AC)	Any model of LSM Any model of LSM Any model of LSM

* Except for LSM-902
** Except LSM-500S/902

